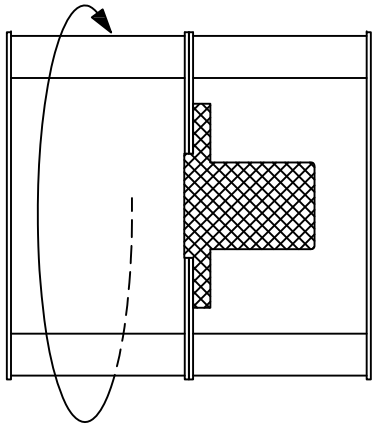
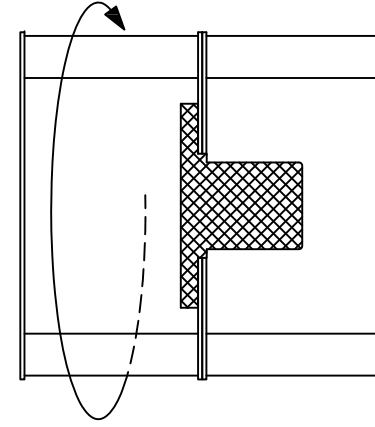
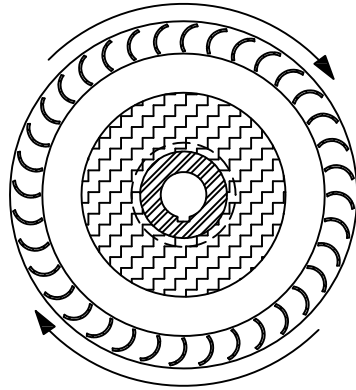


# DWDI DIAGRAMS FOR DETERMINING ROTATION



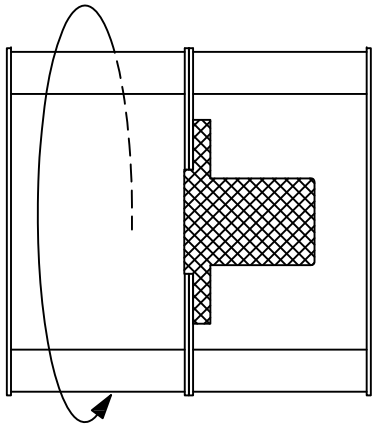
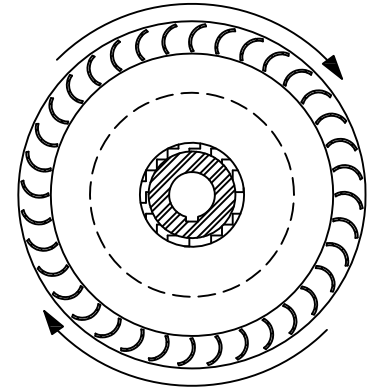
CW WHEEL

-----  
POS. "A" HUB IN CCW



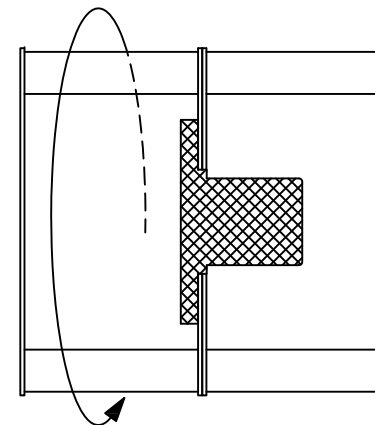
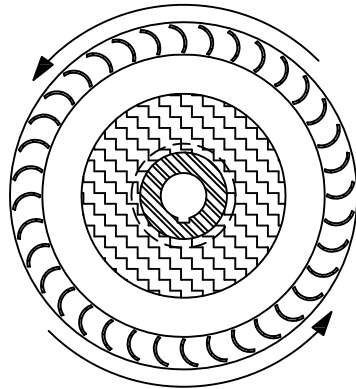
CW WHEEL

-----  
POS. "D" HUB IN CW



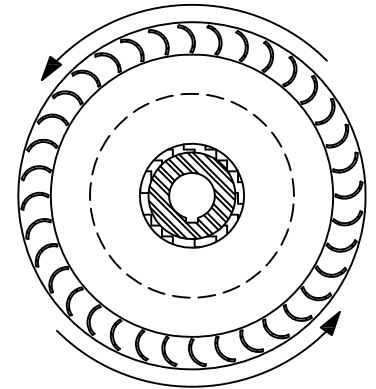
CCW WHEEL

-----  
POS. "A" HUB IN CW



CCW WHEEL

-----  
POS. "D" HUB IN CCW



\*\*\* DWDI ROTATION ALWAYS SPECIFIED FROM THE BARREL END OF HUB \*\*\*

\*\*\* DEFINE THE HUB'S LOCATION BY THE ROTATION OF THE SIDE IT IS MOUNTED IN \*\*\*

\*\*\* IF THE SIDES ARE DIFFERENT SIZES, SPECIFY THE ROTATION AND BLADE LENGTH OF EACH SIDE \*\*\*

\*\*\* FOR STANDARD FORWARD CURVE WHEELS, CCW SIDE WILL ALWAYS HAVE A CONCAVE BACK DISK \*\*\*